

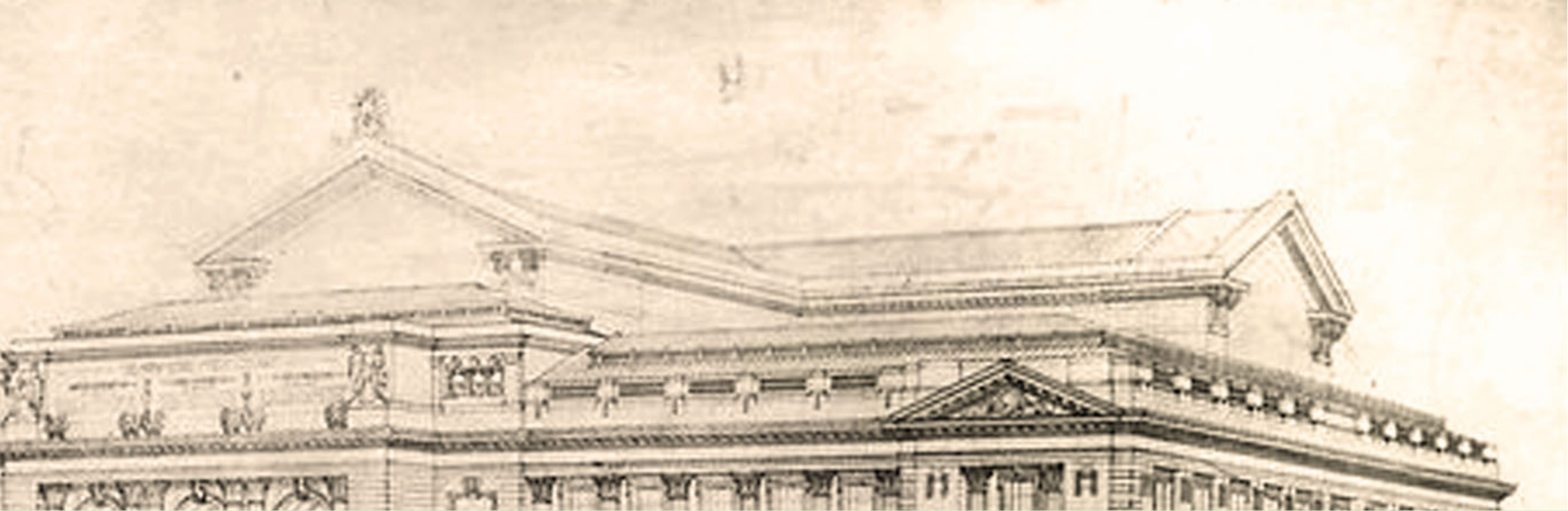


It Takes a Library

Making Evidence-Based Cancellation Decisions Without Losing Your Mind

Session Outline

- ❖ Background
- ❖ Project Parameters
- ❖ Process
- ❖ Observations
- ❖ Outcomes



Background



MacEwan University Library

- ❖ Undergraduate university, 11,855 FLEs
 - ❖ Library emphasizes resources that support student coursework/research
- ❖ Staff
 - ❖ 18 librarians
 - ❖ 2.5 Collections librarians
 - ❖ 36 staff
 - ❖ 8 Collections staff

MacEwan University Library Collection Holdings in 2015-2016

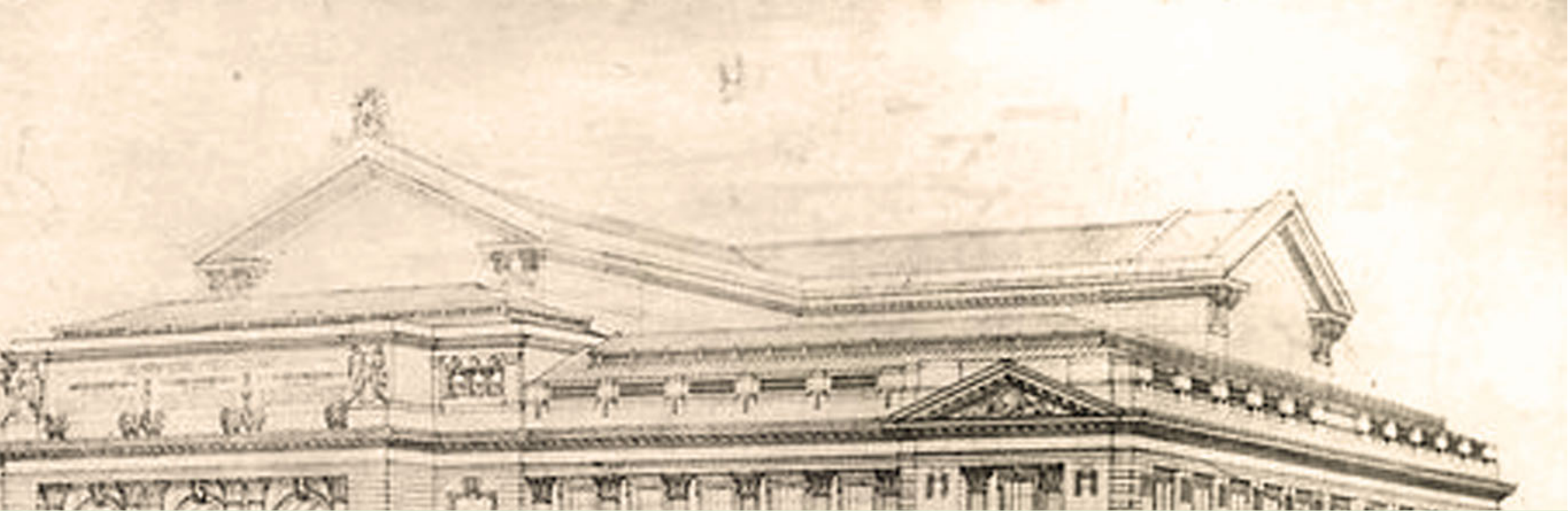
Periodical Subscription Titles (Print & Electronic)	69,051
Number of Licensed Databases	224
Audiovisual Items (Physical & Electronic)	156,394
Print Books	226,284
eBooks	655,308

MacEwan University Library Funding in 2015-2016

Library Operating Budget	\$4.7 million
Library Collections Budget	\$2.5 million

Why this Project?

- ❖ 2015/16 collections budget situation rapidly deteriorated
 - ❖ exchange rate down to \$1.45 CAD/\$1 USD in January 2016
- ❖ Knew 2016/17 would require resource/subscription cuts
 - ❖ One-time funding received to allow evidence based decision making



Project Parameters



Literature Review

- ❖ Found relatively few really relevant articles
- ❖ Key resources were:
 - ❖ Enoch and Harker
 - ❖ Foudy and McManus
 - ❖ Blackburn, McFarland & Reed (VIU rubric)
- ❖ No one methodology properly fit our context
- ❖ Cherry picked what worked for us & developed own approach

Main Project Components

❖ Parameters of what we assessed

- ❖ Resource types prioritized for assessment
- ❖ Data to be collected
- ❖ Data we decided NOT to focus on

❖ Communication

- ❖ Stakeholder input

- Cost
- Use – search/full text
- Cost per use – search/full text
- Searchable in discovery layer
- Subject specialist input
- Percentage of unique content/overlap

Internal

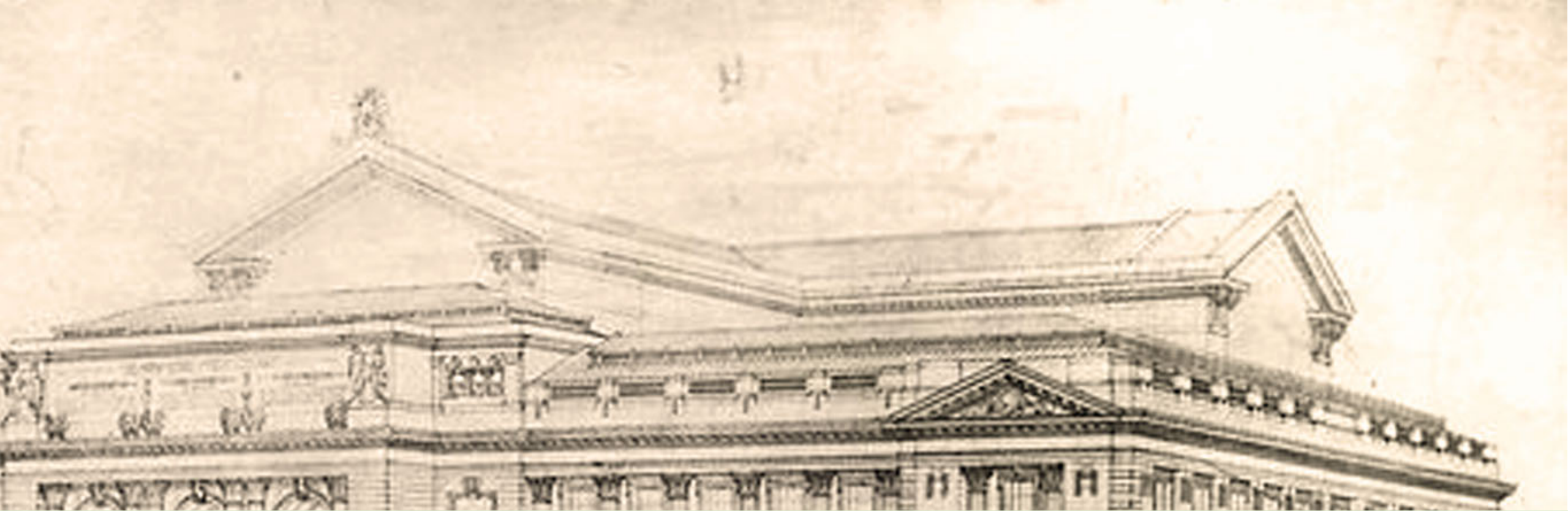
Advisory Group

Subject Specialists

External

um

group comments &

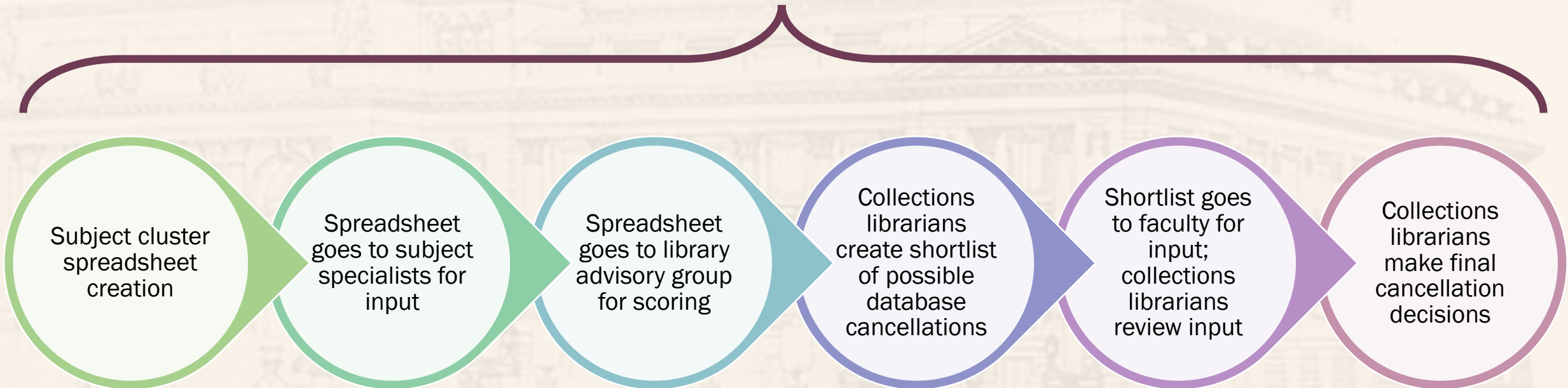


Process



Timeline

Almost everyone in our Collections Unit & all subject specialists had a hand in this project



Spreadsheet Design

- ❖ Clustering of subjects
- ❖ Shared files for expediency of entering information
 - ❖ BUT our internal advisory group received individual files to allow for blind scoring/commenting

Title of resource	Bibliography of Native North Americans	Academic Search Complete	Canadian Literary Centre	ECCO (18th Century Collections Online)	JSTOR	Literary Reference Center
Subject coverage areas	Aboriginal Studies, English, Classics, History	Aboriginal Studies, English, English as an Additional Language, Languages, Philosophy, Classics, History, Interdisciplinary	English	English, History	English, History, Classics, Philosophy, Interdisciplinary	English
Subject specialist(s)	Lindsey, Joan, Valla	Lindsey, Joan, Lana/Michelle, Valla, ALL	Joan	Joan, Valla	Joan, Valla, ALL	Joan
Product type	Articles	Articles	Articles	Articles, Primary Historical Sources	Articles, Primary Historical Sources	Articles, reference content
Vendor	EBSCO	EBSCO	EBSCO	Gale	JSTOR	EBSCO
Cost in 2016-2017 (if known)	package	package		\$2XXX.XX (annual fee)	\$1XXXX.XX	
Cost in 2015-2016				\$2XXX.XX (annual fee)	\$1XXXX.XX	
Cost in 2014-2015				\$5XXXX.XX + \$1XXX.XX (annual fee)	\$1XXXX.XX	
PO #'s for Collections Support Services			42041 - Tal pkg.	1513 - CRKN	41674 - CRKN	42877 -TAL Literary pkg.
Indexed in EDS?	Yes	Yes			Yes	Yes
Searches in 2016	25060445	25152357	8586	1765	49432	25015961
Searches in 2015	13817022	13907002	6383	136	24433	13805758
Average cost per search in 2016	\$ -	\$ -	\$ -	\$ 1.21	\$ 0.35	\$ -
Average cost per search in 2015	\$ -	\$ -	\$ -	\$ 13.73*^	\$ 0.61	\$ -
FT articles accessed in 2016	0	333697	45	no data	95050	32787
FT articles accessed in 2015	0	461523	93	no data	42872	31366

Data Collection Challenges

- ❖ Usage – not as easy as you would think (non-counter compliant; hugely inflated federated searches; indexing only databases)
- ❖ Overlap analysis used SFX & CUFTS but not all databases included (particularly indexing only databases)
- ❖ Cost – many databases are part of consortial packages (didn't have individual prices); ensure not comparing costs in different currencies
- ❖ Clustering – deciding what databases when into which cluster (especially multi-disciplinary databases)

Delving Deeper...

- ❖ Need for additional analysis emanated from each level of consultation
- ❖ Scrutinized indexing & abstracting databases
- ❖ Requested more data from vendors
 - ❖ Overlap between indexing databases
 - ❖ Multi-database overlap reports when at least one indexing database was involved
- ❖ Shifted to close comparisons of content strengths within niche areas of each subject cluster

Communication

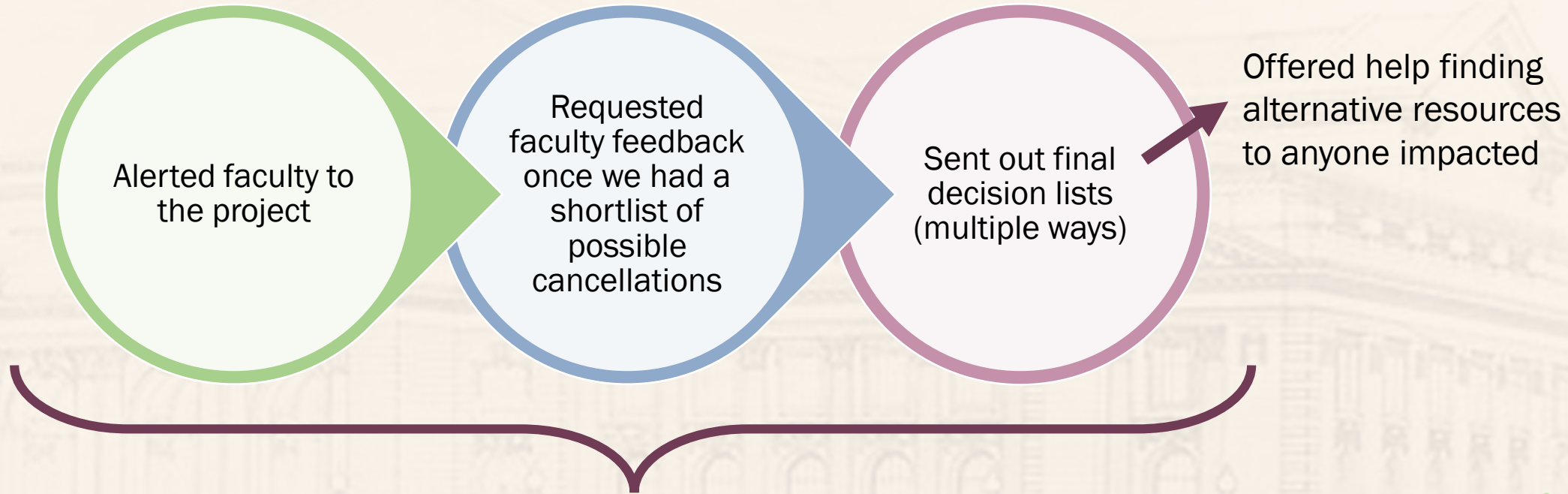
- ❖ Communication was built into the project from the outset
- ❖ We had to think about communication to three main groups
 - ❖ Subject liaisons
 - ❖ Internal advisory group
 - ❖ Faculty

The format of receiving feedback (internal and external) changed from in-person to primarily online/email.

Internal Advisory Group

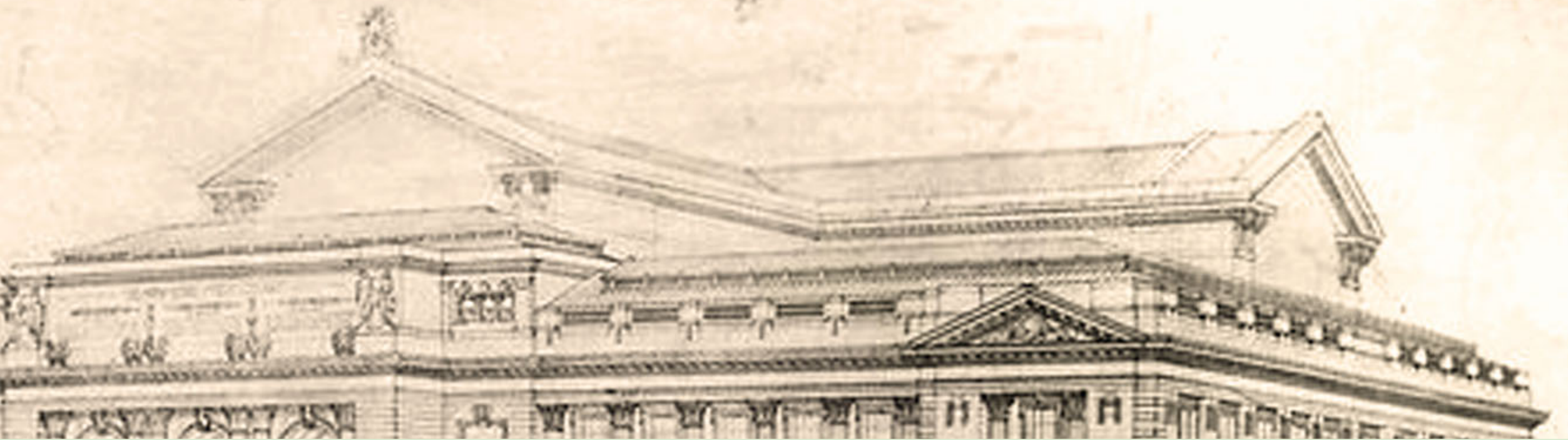
- ❖ Membership: 6 subject librarians representing the range of disciplines at MacEwan
- ❖ Only met in-person once (at the beginning)
 - ❖ Almost everything was done via email/spreadsheets
 - ❖ training/spreadsheet help was often done in-person
- ❖ All feedback/voting was done via live spreadsheets
 - ❖ Voting was on a colour scale (green, yellow, red, blue)

Faculty Input and Final Communication



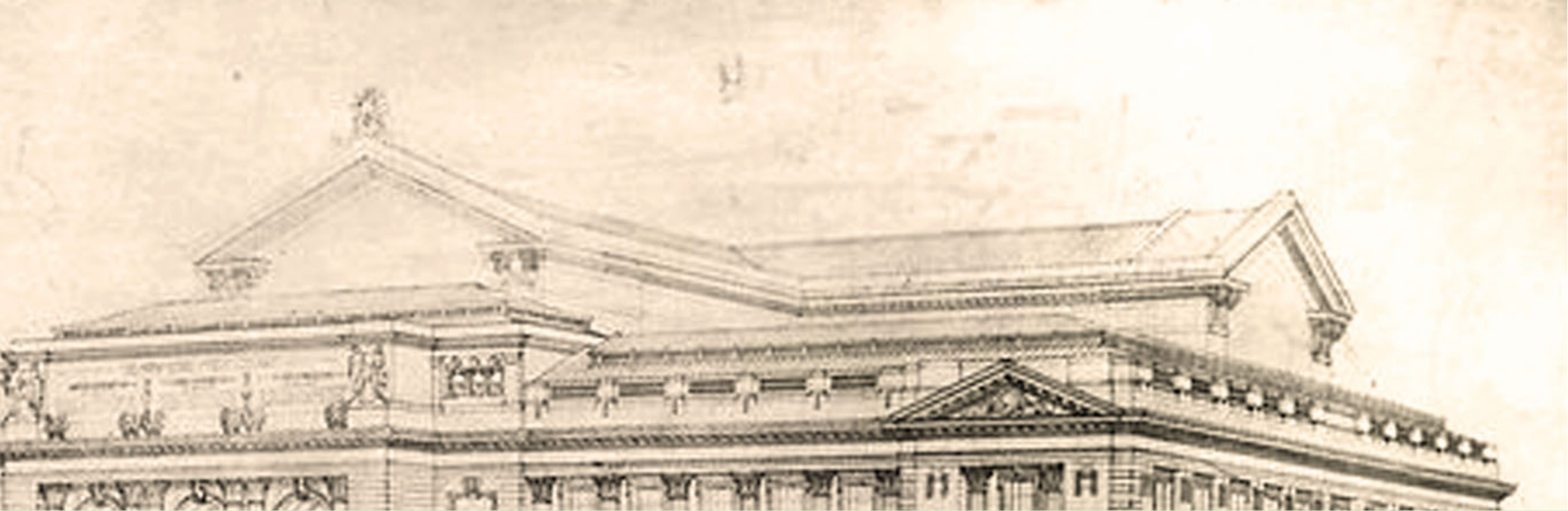
People were always invited to ask questions or give feedback throughout each step of the process

20 faculty members responded to the call for feedback.



Observations





Outcomes

Other than 2 relieved collections
librarians...



Final Numbers

- ❖ 20 databases cancelled
- ❖ \$193,000 in cancelations
- ❖ 1 faculty who said they weren't told about this project
- ❖ 0 complaints about cancellation decisions

Questions?

❖ Alison Pitcher

❖ Collections Assessment Librarian, MacEwan University Library

❖ pitchera2@macewan.ca

❖ Sandy Stift

❖ Associate Dean, Collections Services, MacEwan University Library

❖ stifts@macewan.ca

❖ Project webpage

❖ <http://bit.ly/libcancellations>

References

- Blackburn, J., McFarland, D., & Reed, K. (2013, July). *Culling the Herd in Hard Times: Implementing an Evidence-Based 'Big Deal' Cancellation Support Tool at Vancouver Island University Library*. Poster session presented at the 7th International Evidence Based Library and Information Practice Conference, Saskatoon, SK.
- Enoch, T. & Harker, K. (2015). Planning for the budget-ocalypse: The evolution of a serials/ER cancellation methodology. *The Serials Librarian*, 68, 282-289. doi: 10.1080/0361526X.2015.1025657
- Foudy, G. & McManus, A. (2005). Using a decision grid process to build consensus in electronic resources cancellation decisions. *The Journal of Academic Librarianship*, 31(6), 533-538. doi: 10.1016/j.acalib.2005.08.005